

SAFEABROAD



SITUATION REPORT

October 3, 2023

Venice Bus Crash

Multiple Casualties and Rail-Service Interruptions Near Venice, Italy

SAFEABROAD.COM

Overview

At 7:45 PM on October 3, a passenger bus crashed through a barrier, over a bridge, and into several power lines in Mestre, Italy, near Venice. Twenty-one passengers, including two children, are confirmed dead, with at least forty more injured. At this time, local authorities have confirmed that several Ukrainian, German, Bulgarian, French, Spanish, and Croatian passengers were on board. There have been no reports of Americans injured or killed at this time.

Key Takeaways

1. **Twenty one people are confirmed dead, with roughly forty more injured.** Two children are confirmed dead, and at least four more people are currently in critical condition. Fourteen additional people have been hospitalized. Wounded from the crash are being evacuated to several nearby medical centers.
2. **No Americans are known to be among the casualties, but individuals from several other European nations have been confirmed.** As of now, Italian, Ukrainian, German, Croatian, French, Spanish, and Bulgarian nationals have been identified in the wreckage and among the injured. First responders are still working to identify victims.
3. **The crash, along a major rail line, has severely impacted service between Venice and the mainland.** Trenitalia has reported multi-hour delays for several major intercity and high-speed lines connecting Venezia Mestre and Venezia Santa Lucia. Further delays may emerge as crews remove the wreckage.

Incident Details

On October 3, at least 21 tourists were killed after a tourist bus veered off a bridge into an electric railroad, causing the bus to catch on fire. The crash occurred in Mestre, Italy, a suburb of Venice, causing significant travel delays to surrounding bus and train lines.

A rented bus transporting tourists from Venice's city center crashed in Mestre, Italy, falling thirty meters off the road onto a nearby electric railroad.¹ Part of the bus landed on several electric power lines near Venezia Mestre station, causing the bus to catch fire. Out of the sixty passengers and one bus driver, approximately twenty-one people have been killed, including two children, and the other forty have been injured.² At least four people are in critical condition, and fourteen others are hospitalized.



The Regional Governor, Luca Zaia, confirmed that the bus was transporting passengers of “various nationalities,” not just Italian citizens.³ While no American tourists have been identified at this time, Italian, Ukrainian, German, Croatian, French, Spanish, and Bulgarian nationals are amongst the confirmed casualties. First responders are still investigating the crash's direct cause and confirming victims' identities. Officials believe the subsequent fire was intensified by methane fuel combustion onboard the bus.⁴

The crash has significantly impacted rail service connections between Venice and mainland Italy. Several major intercity lines are experiencing multi-hour delays, but Trenitalia and local providers have confirmed that no trains will be canceled.⁵ Authorities have concerns with the security of the

¹ <https://insiderpaper.com/bus-falls-from-venice-bridge/>

² <https://www.euronews.com/2023/10/03/italy-reports-of-a-number-of-fatalities-after-a-bus-plunges-off-bridge-in-venice>

³ <https://www.bbc.com/news/world-europe-67001518>

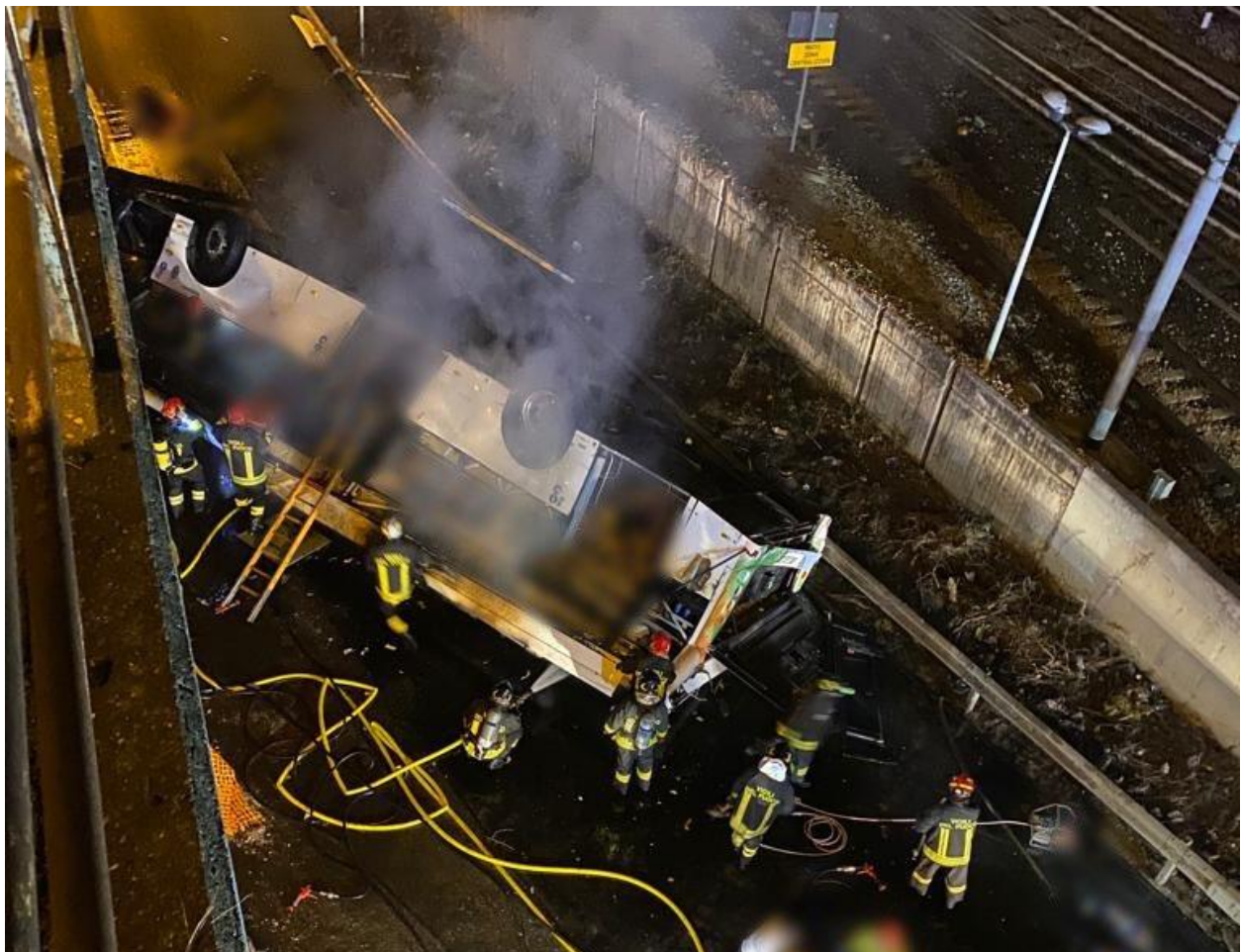
⁴ https://www.lemonde.fr/en/international/article/2023/10/03/in-italy-a-bus-crash-kills-at-least-20-near-venice_6146390_4.html#

⁵ <https://www.trenitalia.com/it/informazioni/Infomobilita/notizie-infomobilita.html>

area, as the bus has not yet been removed, and the batteries may reignite if not cooled.⁶ A major emergency protocol has been implemented to ensure that resources in nearby hospitals are available, and that the appropriate emergency service personnel are on the scene.⁷

Italy has a history of deadly accidents involving buses within the past decade.

In 2013, one of Italy's most devastating road accidents killed forty people when a bus veered off a viaduct and plunged into a ravine near Naples.⁸ In 2017, an accident near Verona killed sixteen people on a bus carrying Hungarian students. In 2018, forty-three motorists and passengers died when a bridge collapsed in Genoa.⁹ Acknowledged infrastructural and regulatory deficiencies have been attributed in the disasters, which will likely create more incidents in the future.



⁶https://nuovavenezia.gelocal.it/regione/2023/10/03/news/autobus_incidente_cavalcavia_mestre_vittime_cosa_successo-13615173/?ref=NUVE-M5-S1-T1

⁷ https://www.mirror.co.uk/news/world-news/breaking-italy-bus-crash-least-31097912?utm_source=app

⁸ <https://apple.news/Ao21ElwMZQa6iCqtbKZp90A>

<https://www.washingtonpost.com/world/2023/10/03/venice-bus-crash-bridge-overpass-mestre/>

⁹ <https://www.washingtonpost.com/world/2023/10/03/venice-bus-crash-bridge-overpass-mestre/>



Implications for International Education

SafeAbroad Analysts predict that the City of Venice will see ground travel delays in the neighborhood of Mestre, bus and rail travel delays, and higher hospital emergency room waiting times across the City of Venice metropolitan area in the coming 24 hours.

As a developing story, expect further information on victims and resulting disruptions to become available as authorities continue their rescue efforts and investigate the cause of the crash.

The following recommendations may help mitigate the risks outlined in this report:

- Travelers should monitor Trenitalia, City of Venice, and other Italian government outlets for updates regarding rail and bus travel plans.
- Travelers should anticipate delays in emergency rooms in the next 24 hours in hospitals located in Mestre, City of Treviso, City of San Polo, Town of Mirano, and City of Padova.
- Travelers should plan alternate routes, if traveling by public transportation, specifically electric rail in Mestre and its surrounding areas.
- Travelers should avoid the scene of the accident as emergency response personnel continue their rescue efforts.
- Travelers should allow ample time when traveling in the following days, public wakes and demonstrations may take place for the lives lost in the accident, creating travel and operation delays in the ar

